



Imaging Redefined

# VITAL IMAGING Newsletter

## Imaging Redefined

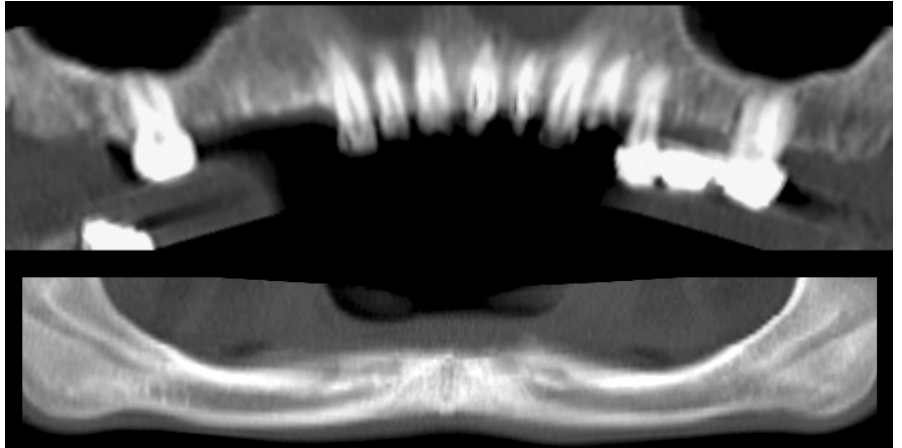
### State Of The Art: Dental CT Imaging

#### **A WHOLE NEW WAY TO LOOK AT THE JAW!**

*Until recently, dentists have evaluated the jaw predominantly by using radiographs. The development of Dental CT, however, has completely revolutionized and changed the fashion in which we radiographically evaluate the jaw today.*

#### **Indications:**

- > Dental Implants
- > Impacted teeth in the Maxilla
- > Lingual vascular canals of Mandible
- > Vertical root fractures
- > Inflammatory diseases
- > Endodontal & Periodontal diseases
- > Jaw Augmentation
- > Oroantral fistula
- > Tumors and cysts
- > Root evaluation



Panoramic Images—Maxilla & Mandible

#### **“PRECISE IMPLANTOLOGY REQUIRES PRECISE IMAGING”**

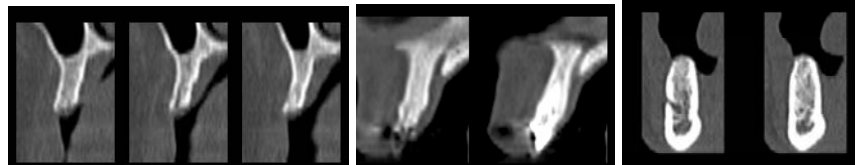
#### **VITAL IMAGING in Dental Imaging provides**

- > Dental CT
- > 3D CT Maxilla / Mandible
- > 3D CT Face
- > Digital OPG
- > Digital Lateral Cephalogram
- > Digital X-ray TM Joints

#### **THINK DENTAL! THINK VITAL!**

#### **VITAL IMAGING CENTRE**

B – Royal Classic, New Link Road,  
 Next to Fame Adlabs,  
 Andheri - West, Mumbai – 53.  
 Phone: **2630 1184 / 85**  
 Email: [info@vitalradiology.com](mailto:info@vitalradiology.com)  
 Website: [www.vitalradiology.com](http://www.vitalradiology.com)  
 Routine: - 8:30A.M. – 8:30P.M.  
 Emergency: - **24 x 7**



- > Quality of the bone
- > Exact location of vital structures i.e. mandibular canal, mandibular foramen and incisive foramen.
- > Focal / Diffuse cystic lesions in the bone
- > Maxillary sinus status

Dental implants are the next best thing to "getting your own teeth back". However, this precise and sophisticated technology requires careful planning, based on highly accurate imaging i.e. Dental CT to be effective. Conventional Imaging with radiographs i.e. Intra-oral xrays, OPGs, etc are often inadequate.

For Private Circulation Only.

For the online version visit our website  
[www.vitalradiology.com/newsletters](http://www.vitalradiology.com/newsletters).

**> EXCELLENCE IN IMAGING... ALWAYS!**



Imaging Redefined

# VITAL

# IMAGING Newsletter

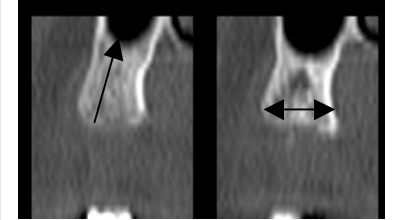
**Dental Imaging is not just about taking OPGs or Intra-oral X-rays any more. Advanced Imaging technologies like Dental CT available at Vital Imaging are helping provide a better view of complex dental anatomy, pathologies, and injuries.**

### Technique of performing Dental CT:

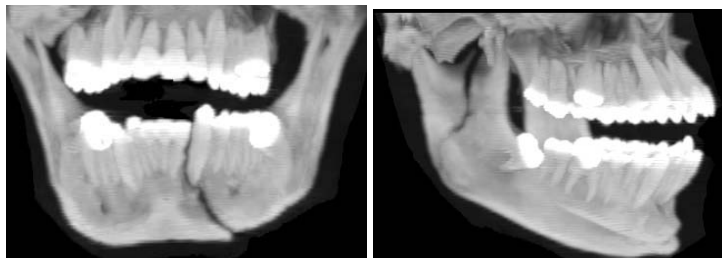
- Patient placed in supine position on CT table
- Thin (1mm) transverse images are obtained parallel to the alveolar ridge / occlusal plane.
- Images are fed into the special Dental CT program & multiple Paraxial & Panoramic images are obtained.



**Topogram**



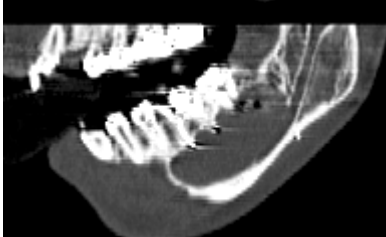
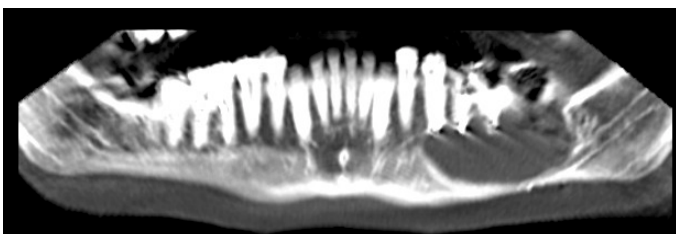
**Paraxial Image** Accurate Height & Width measurement



**3D IMAGES**

**Dental trauma**, is another area where CT is very useful. We take one image, and then we can see the teeth from all directions, so it is practically impossible to miss even a **vertical root fracture**. Because a vertical root fracture necessitates extraction of the tooth, it would be advantageous to use the most efficient & reliable means of establishing the diagnosis preoperatively i.e. a CT scan.

### Endosteal & Periosteal Disease



**Odontogenic keratocyst.**

**Conventional** Assessment with OPG images that were / are used are inadequate because they provide no information on the thickness of the jaw. They have a distortion factor of about 25% which make accurate measurement difficult at best. It is also difficult to determine the exact location of the mandibular nerve & other important structures.

**Advanced** Dental CT provides images in the paraxial & panoramic planes that provide clear & comprehensive assessment & accurate measurements.

**Surgeons are increasingly requesting a CT scan before inserting a dental implant**



**Pointed**



**Flat**

In general surgeons like the bone to be at least 5mm wide and 7mm high to place implants.

*The objective of this newsletter is to illustrate the typical indications of dental imaging and dental-related diseases of the jaws with dental CT, and to show where it can serve as an addition to conventional imaging methods in dental imaging.*

For further information call us on  
Ph: 26301184 / 85

**THINK DENTAL! THINK VITAL!**

For Private Circulation Only.

For the online version visit our website

[www.vitalradiology.com/newsletters](http://www.vitalradiology.com/newsletters).

Page 2/2.

**> EXCELLENCE IN IMAGING... ALWAYS!**